

Securing and redevelopment of boulevard Lalande

**Eastbound One-Way, Addition of Bike Lanes
and a Sidewalk**





Context

To respond to a need to secure users of Boul. Lalande, we proceeded to the study of it's redevelopment.

Our mandate: To ensure that boul. Lalande is safe for it's vulnerable users, i.e. pedestrians and cyclists.

Being limited by the location of existing residences, Hydro-Québec poles and the proximity of the river, we considered the implementation of Boul. Lalande as a One-way.

In doing so, we would obtain the necessary clearance for the implementation of a sidewalk, two bicycle lanes and a vehicle traffic lane.





Context (continued)

In order to determine the direction of the one-way street, we commissioned an engineering firm to produce an impact study for the establishment of a one-way street on Boul. Lalande, in order to identify the optimal direction of the one-way street.

The study includes the area bordered by boul. Lalande to the northwest and by Boul. Gouin Ouest and rue Sainte-Suzanne to the southeast.

The conclusion of the report is to establish the one-way street of Boul. Lalande in an EASTBOUND direction, allowing good accessibility to schools and services in the study area with the safest solution for users.





Context (continued)

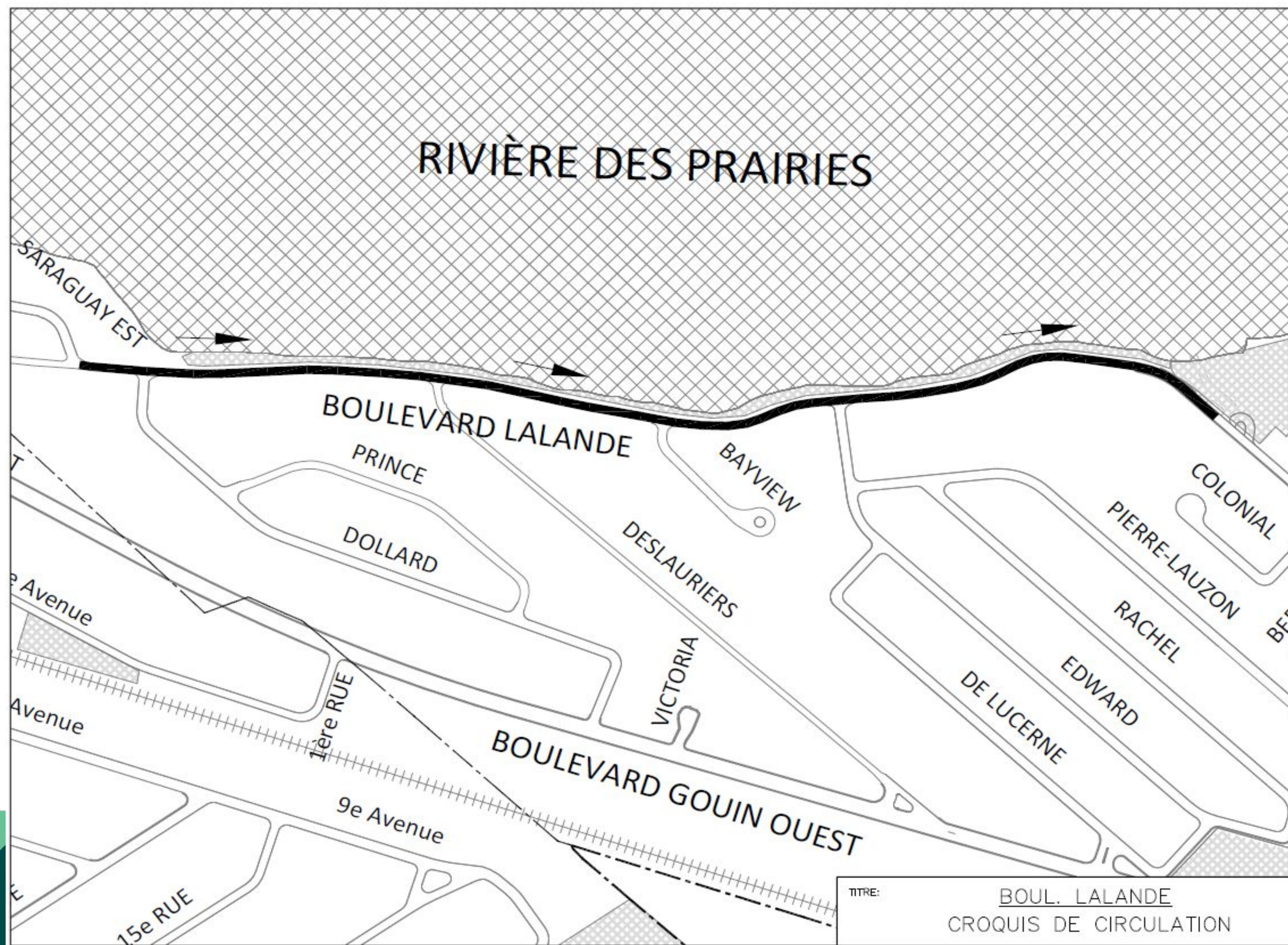
The eastbound one-way is chosen for the following reasons :

- A westbound one-way leads to greater delays than the one-way eastbound scenario;
- A westbound one-way requires left turns for users who are reassigned towards Boul. Gouin Ouest. Left-hand turns can cause safety issues on high traffic streets;
- Accessibility to schools and services in the study area would be reduced by a westbound one-way since they can only access these services from Boul. Gouin with a left turn maneuver.





Context in plan



TITRE: BOUL. LANLANDE
CROQUIS DE CIRCULATION



Redesigning the public domain

- A sidewalk will be on the North side, where the HQ posts are currently;
- A contraflow bike lane, delimited by painted road markings and bollards;
- A 3.5 m wide traffic lane;
- A bike lane in the direction of vehicular traffic, delimited by painted road markings and bollards;
- The speed bumps are retained as well as the posted speed limit of 30 km/h;
- A lowered concrete curb delimiting the roadway on the south side;
- Implementation of a U-turn loop at the level of the Parc des Anciens-Combattants.

This scenario does not require moving the HQ poles.

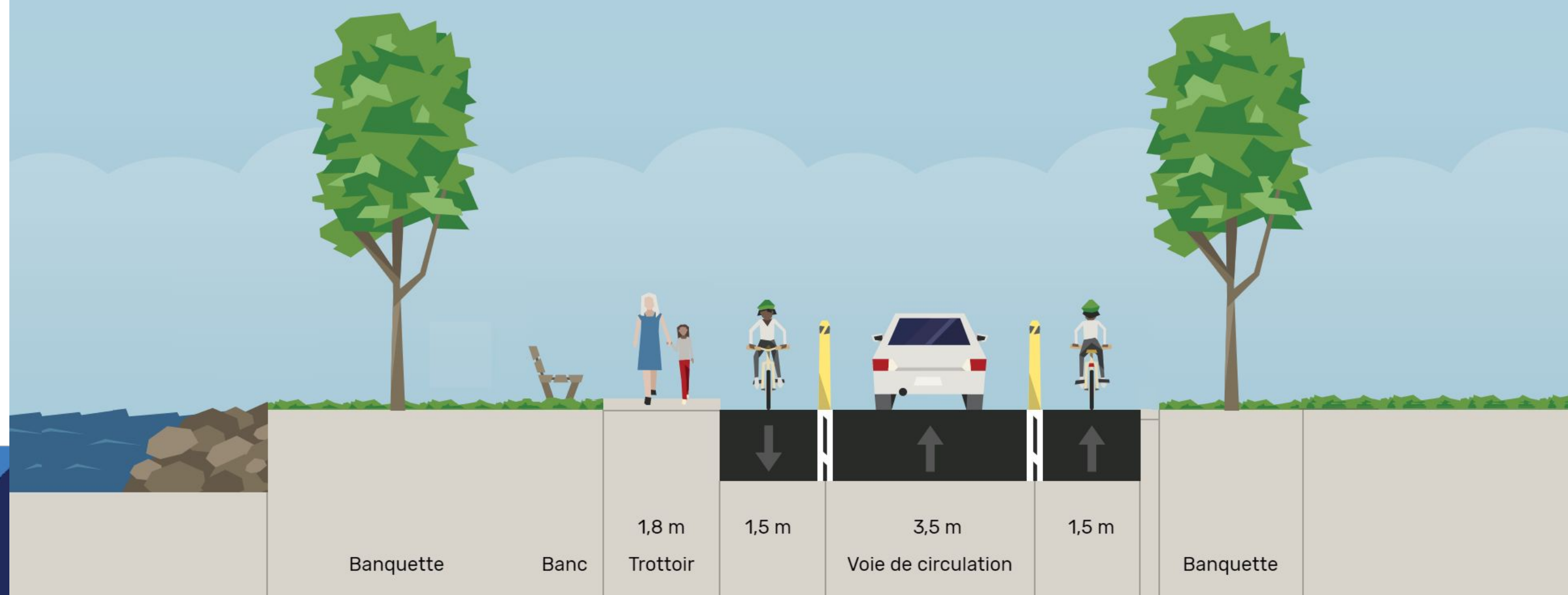




Redesigning the public domain

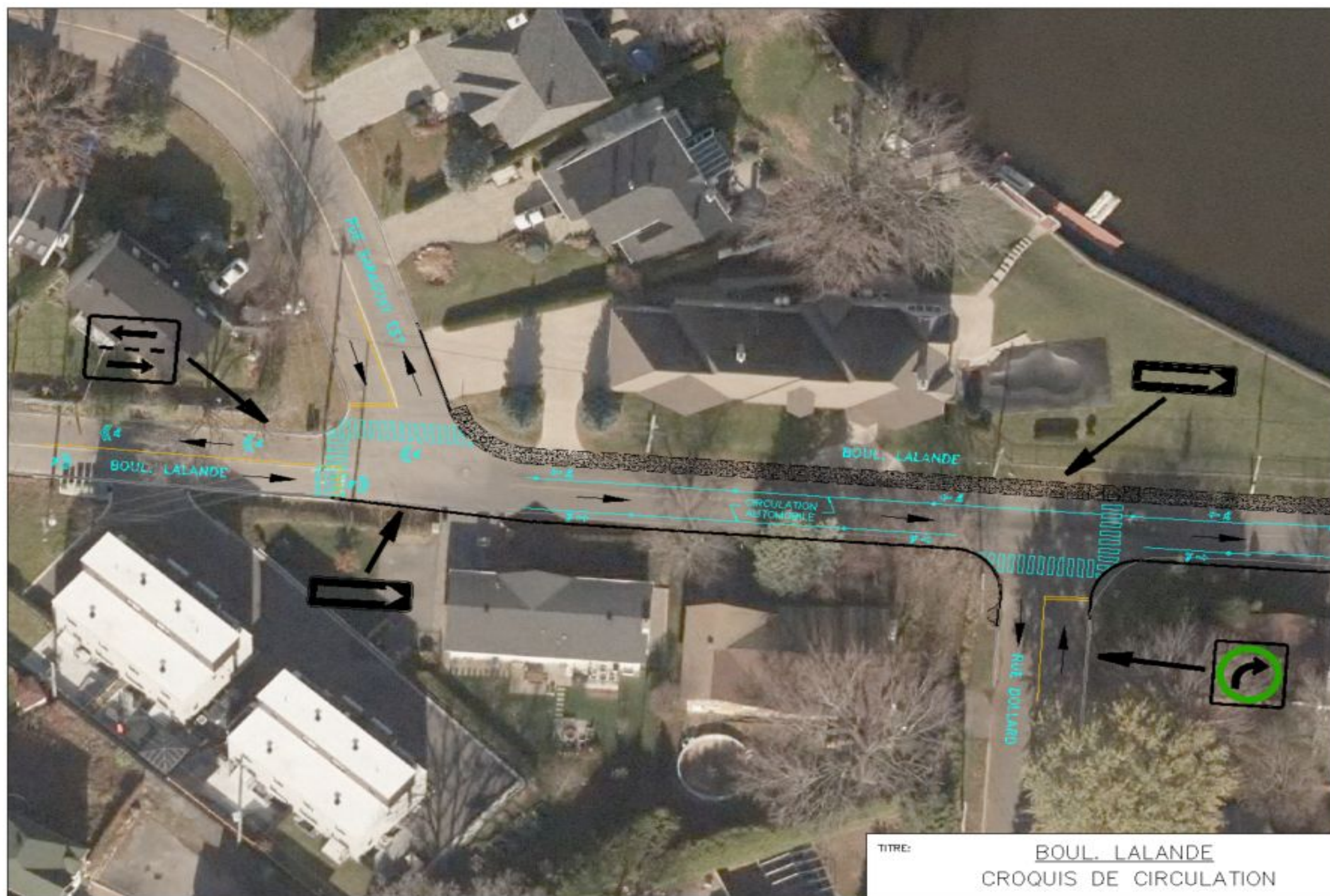
Widths are indicative only.

Boulevard Lalande



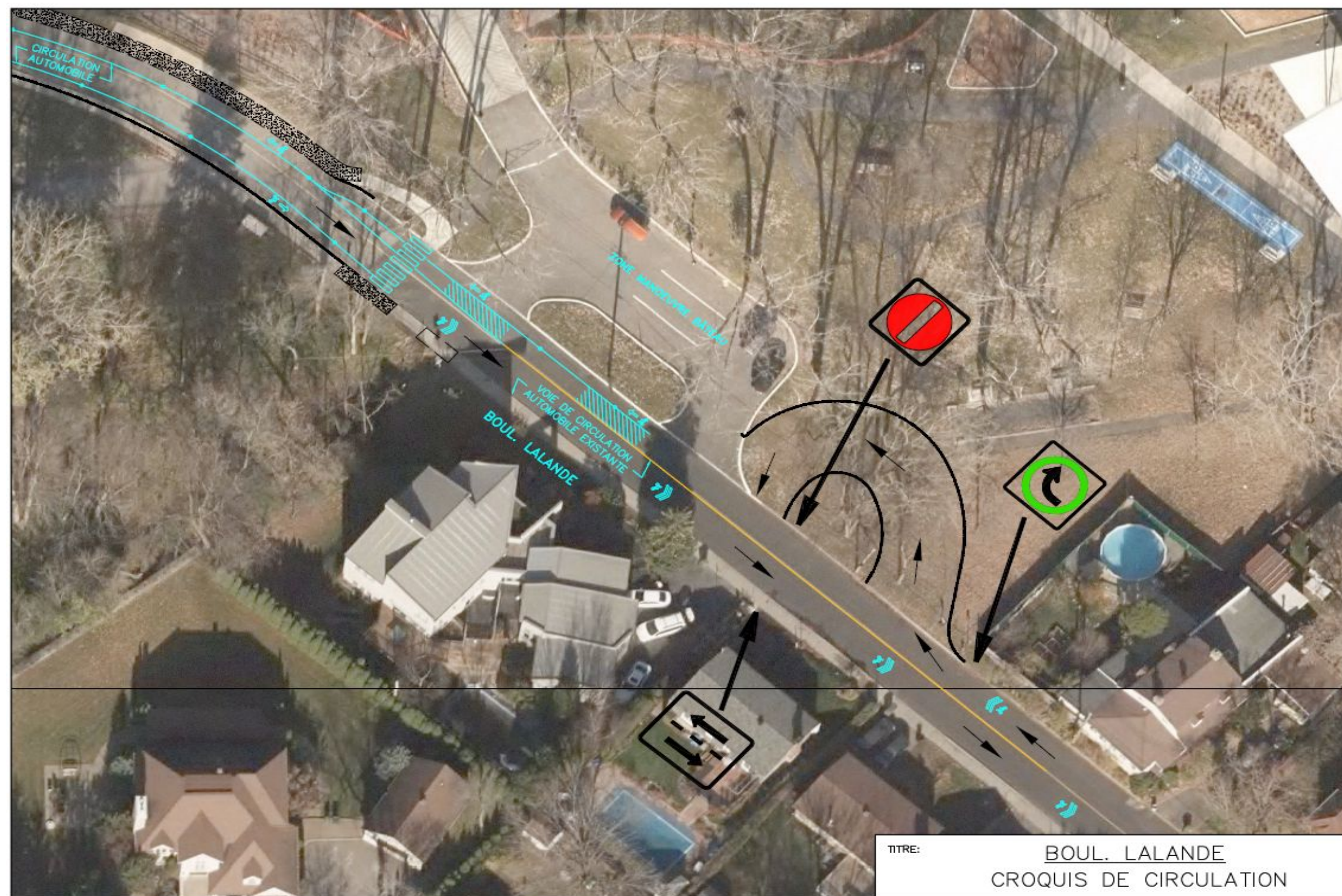


Start of the one-way at rue Saraguay Est





**End of the
one-way
at Parc des
Anciens-
Combattants
including the
u-turn loop.**





Features of the project

A continuous sidewalk, on its own site, on the North side, comfortable, attractive and safe for pedestrians. In addition, the new sidewalk will be accessible 12 months a year.

The addition of a sidewalk on its own site is essential in the development concept in order to increase the **safety** of the most vulnerable users and encourage them to use this new infrastructure rather than walking on the roadway, as we can currently observe.





Features of the project (continued)

A bike lane in the opposite direction to vehicular traffic and the addition of bollards will improve **safety** for cyclists.





Benefits of the project

- Scenario avoids any displacement of the HQ poles minimising costs and scheduling;
- Comfortable, inviting and **safe** sidewalk for pedestrians;
- **Safety** of cyclists is enhanced in both directions of traffic;
- Narrowing of the vehicular lane will decrease speed while allowing turns at intersections and exits at private entrances;
- Sidewalks are **accessible** 12 months a year with snow removal;
- The one-way eastbound does not reduce access to schools ;
- We avoid the blending of users (pedestrians, cyclists and drivers);
- Will improve the aesthetics of boulevard Lalande.





Impacts of the project

- **Change of habits for some residents and users of boul. Lalande;**
- **Increased traffic at certain intersections with boul. Gouin Ouest, in particular, that of boul. Lalande during morning rush hour.**





Mitigation measures

- **Adjustment of traffic light timing at the intersection of boulevards Lalande and Gouin Ouest as well as at the intersection of rue Sainte-Suzanne and boul. Gouin Ouest;**
- **Adjustment of traffic light timing on Boul. Gouin at the three intersections with rue Alexander, boul. Lalande and rue Sainte-Suzanne;**





Mitigation measures (continued)

- **Addition of turning lanes on boul. Lalande to aid turning on boul. Gouin Ouest eastbound and westbound.**





Timeline

- **Call for tenders: Spring / summer 2023;**
- **Start of work: Fall 2023.**





Question period

